



Copyright TENSOR AB

# AHA-2500 SERIES

The 2500 series are Low Weight Cutters designed for chains and rods with high tensile strength or high hardness. The 2500 tool gives a pinch ended cut.

The 2500 tools are hydraulically operated with a maximum pressure of 700 Bar and can be supplied for single or doubleacting operation

The 2500 tools are CE marked.

The 2500 tools are very easy to operate by a switch on the handle or by a foot pedal.

Recommended powerpack units:

AHP-7002, electric pump.

AHP-7010, electric pump.

AHP-7020, electric pump.

AHP-7005-H, hand pump.

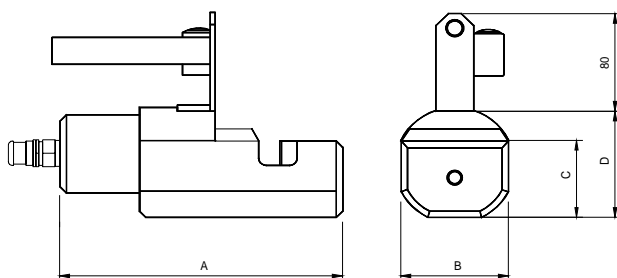
AHP-7003- P, pneumatic pump.

Accessories:

Hosekit AH-SL

## DIMENSIONS (mm):

	2511	2516	2522	2528	2535
<b>A</b>	196	232	327	278	344
<b>B</b>	65	85	107	120	150
<b>C</b>	47	63	86	98	115
<b>D</b>	70	90	121	138	160



## CUTTING DATA WIRE DIAMETER:

Tensile Strength N/mm	2511	2516	2522	2528	2535
900:	11	16	22	28	35
Chain CI 8:	9	13	19	22	26
Chain CI 5:	11	16			
Chain CI 3:			22	28	35
Chain CI 2:	11	16			

## CUTTING TIME:

Pump unit

AHP-7010:0,9	2,1	5	9,5	17 s
AHP-7020:0,5	1,1	2,5	4,7	8,3 s

**WEIGHT:** 5 8 18 21 40 kg

## SPECIFICATION:

CUTTER Pinch Cut

a= Max dimension:

mm	11
	16
	22
	28
	35

b= Function: Singleacting = 1  
Doubleacting = 2

ACCESOIRES:

HANDLE

Without electrical switch = 0

With electrical switch = 1

AHA- 25aa- b

AHZ- a

TEN0003

Subject to alteration without previous notice.

Distributed by: B. W. Darrah, Inc.  
115 S 4th Avenue, St. Charles, IL 60174  
(630) 584-1900 Fax: (630) 584-2599